

177x

LTE Module

Instructions

Introduction

The 177X LTE module provides global LTE (4G) communications and allows connections to Fluke 177X products located remotely. The module requires a SIM card and contract with a service provider that has coverage where the instrument and module are located.

With this module you can wirelessly communicate from a computer to the instrument. Communication can be through a VNC (Virtual Network Connection) or through the *Fluke Energy Analyze Plus* application package. With this remote connection you do not have to frequently visit the site location to observe how a site survey is progressing. All the measured and logged data is available through the remote connection.

Contact Fluke

Fluke Corporation operates worldwide. For local contact information, go to our website: www.fluke.com.

To register your product, or to view, print, or download the latest manual or manual supplement, go to our website.

+1-425-446-5500 fluke-info@fluke.com

Safety Information

A **Warning** identifies hazardous conditions and procedures that are dangerous to the user. A **Caution** identifies conditions and procedures that can cause damage to the Product or the equipment under test.





Warning

To prevent possible electrical shock, fire, or personal injury:

- **Read all safety information before you use the Product.**
- **Do not alter the Product and use only as specified, or the protection supplied by the Product can be compromised.**
- **Carefully read all instructions.**
- **Do not use the Product if it operates incorrectly.**
- **Do not work alone.**
- **Use only specified replacement parts.**
- **Have an approved technician repair the Product.**
- **Disable the Product if it is damaged.**
- **Do not exceed the Measurement Category (CAT) rating of the lowest-rated individual component of a Product, probe, or accessory.**

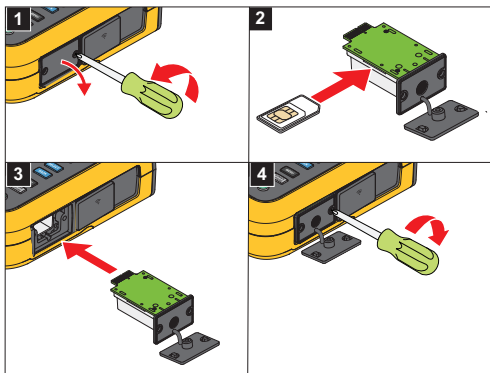
Symbols

The table below lists the symbols that can be used on the Product or in this document.

Symbol	Description
	Consult user documentation.
	WARNING. RISK OF DANGER.
	WARNING. HAZARDOUS VOLTAGE. Risk of electric shock.
	This product complies with the WEEE Directive marking requirements. The affixed label indicates that you must not discard this electrical/electronic product in domestic household waste. Do not dispose of this product as unsorted municipal waste.

Instructions

Module Installation

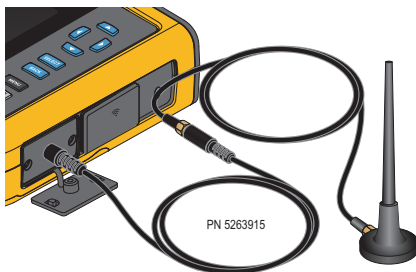


Antenna Attachment

External Antenna with Cable

⚠️⚠️ Warning

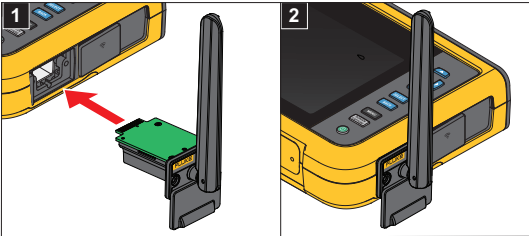
To prevent possible electrical shock, fire, or personal injury, use Product approved measurement category (CAT) antenna cables when the Product is installed in environment where wires or exposed metal parts provide access to hazardous live voltage, such as, in cabinets.



Note

The external antenna is not sold by Fluke. The antenna cable connects to the antenna with a SMA connector that has an outside thread and a center receptacle (SMA female/jack). Former FCC regulations required that WiFi equipment must use reverse polarity connectors. You must use an SMA male plug to RP-SMA female adapter if the antenna uses a RP-SMA male connector with an internal thread and center receptacle.

177x Antenna



Specifications

Size72.3 mm x 45.6 mm x 28.5 mm

Weight35 g

Storage Temperature-20 °C to 60 °C

Note

Complete specifications are at www.fluke.com. See the 1773/1775/1777 Product Specifications.

SafetyIEC 61010-1: Pollution
Degree 2

Electromagnetic Compatibility (EMC)

InternationalIEC 61326-1: Basic
Electromagnetic Environment,
CISPR 11: Group 1, Class A

Group 1: Equipment has intentionally generated and/or uses conductively-coupled radio frequency energy that is necessary for the internal function of the equipment itself.

Class A: Equipment is suitable for use in all establishments other than domestic and those directly connected to a low-voltage power supply network that supplies buildings used for domestic purposes. There may be potential difficulties in ensuring electromagnetic compatibility in other environments due to conducted and radiated disturbances.

Caution: This equipment is not intended for use in residential environments and may not provide adequate protection to radio reception in such environments.

Korea (KCC).....Class A Equipment (Industrial Broadcasting & Communication Equipment)

Class A: Equipment meets requirements for industrial electromagnetic wave equipment and the seller or user should take notice of it. This equipment is intended for use in business environments and not to be used in homes.

USA (FCC).....47 CFR 15 subpart B. This product is considered an exempt device per clause 15.103.

4G/LTE Specification

LTE categoryLTE Cat 4 (max. 150 Mbit/s downlink, 50 Mbit/s uplink)


Frequency bands.....LTE-FDD: 1, 2, 3, 4, 5, 7, 8, 12, 13, 14, 18, 19, 20, 25, 26, 28, 66, 71

LTE-TDD38, 39, 40, 41

WCSDMA.....1, 2, 4, 5, 6, 8, 19 (617 MHz to 2690 MHz)

SIM card slotMini-SIM (2FF)

Regulatory/Carrier

certifications.....  > **Radio Certifications** on the 177x Product

SIMPLIFIED EU DECLARATION OF CONFORMITY

Hereby, Fluke declares that the radio equipment contained in this Product is in compliance with Directive 2014/53/EU. The full text of the EU declaration is available at the following internet address: www.fluke.com/RED

LIMITED WARRANTY

This Fluke product will be free from defects in material and workmanship for 2 years from the date of purchase. This warranty does not cover fuses, disposable batteries, or damage from accident, neglect, misuse, alteration, contamination, or abnormal conditions of operation or handling. Resellers are not authorized to extend any other warranty on Fluke's behalf. To obtain service during the warranty period, contact your nearest Fluke authorized service center to obtain return authorization information, then send the product to that Service Center with a description of the problem.

THIS WARRANTY IS YOUR ONLY REMEDY. NO OTHER WARRANTIES, SUCH AS FITNESS FOR A PARTICULAR PURPOSE, ARE EXPRESSED OR IMPLIED. FLUKE IS NOT LIABLE FOR ANY SPECIAL, INDIRECT, INCIDENTAL OR CONSEQUENTIAL DAMAGES OR LOSSES, ARISING FROM ANY CAUSE OR THEORY. Since some states or countries do not allow the exclusion or limitation of an implied warranty or of incidental or consequential damages, this limitation of liability may not apply to you.

Fluke Corporation
P.O. Box 9090
Everett WA 98206-9090
U.S.A.

Fluke Europe B.V.
P.O. Box 1186
5602 BD Eindhoven
The Netherlands

11/99