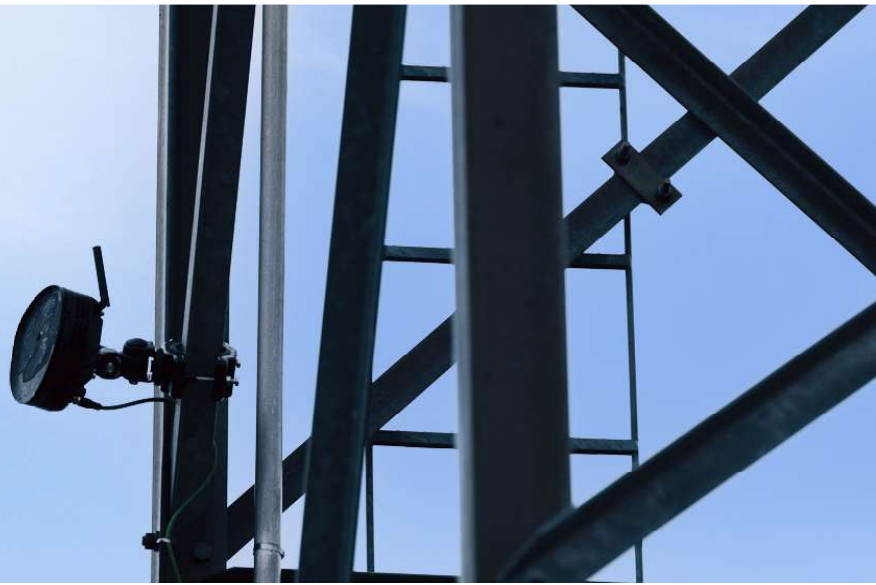


Flir Si2a-PD



FREQUENTLY ASKED QUESTIONS

What is the Si2a-PD?

The Si2a-PD is a fixed Acoustic Imaging camera from Flir.

What are the main differences between the Si2 and the Si2a-PD?

The primary difference is the use case. While the Si2-Series is purpose-built for handheld inspections, the Si2a-PD is designed for continuous, fixed acoustic monitoring. It has a dedicated power supply instead of a battery, and does not include a display screen.

Can the Si2a-PD be mounted on a tripod?

The Si2a-PD uses a VESA-compatible mounting interface, which can be adapted for various installation requirements, including tripods.

What software comes with the camera?

The Flir Si2a-series of cameras are compatible with Flir Assetlink, which collects and records acoustic notifications and will allow tagging against specific assets. The Si2a-series can also be used as a stand-alone product utilizing a built-in configurator, and images can be analyzed in the Flir Acoustic Viewer.

What is Flir Assetlink and how is it used?

Flir Assetlink is an asset-centric solution that provides a holistic view about the health of critical assets from thermal, acoustic, or other sensors and inputs. This allows multiple data-points to be collected and reviewed simultaneously to optimize condition based monitoring programs and procedures.

What is a configurator tool and how is it used?

A local, web-based configurator tool can be accessed over Wi-Fi. The configurator tool allows users to view the camera feed, create zones of interest, set alarm thresholds, and save .NLZ files. Snapshots can also be exported for further analysis or record-keeping.

Do I need special training to operate the Si2a-PD ?

No. The camera includes a Quick-Start Guide and is intuitive to use, even for users with minimal technical training. It provides comprehensive results in real time.

How can I perform software updates on the Si2a-PD?

Software updates are performed through the configurator tool via **Settings** → **System** → **Software Update**. An **.NLUPDATE** file is required. Contact Support to request the update file.

How should I clean the camera?

Power off the camera and gently wipe the chassis with a damp cloth. Do not attempt to clean the microphone array, as this may cause damage. Flir is not responsible for any damage caused by cleaning the microphone array.

What are the minimum and maximum operating temperatures for the Si2a-PD?

The camera operates from -20°C (-4°F) to 50°C (122°F).

What is the field of view (FOV) of the camera?

75° diagonal.

Does the Si2a-PD need to be calibrated?

The camera is calibrated by Flir during production. Recalibration is currently only possible through Flir. In the future, calibration using the Flir Acoustic Tester will be supported.

Can I use the Si2a-PD in the rain?

Yes. The Si2a-PD has an IP66 rating, meaning it is protected against powerful water jets from any direction for at least 10 minutes. For harsher or prolonged wet conditions, installing a protective cover is recommended.

What communication protocols does the Si2a-PD support?

TCP/IP, RTSP, MQTT, SMTP and FTP

How can I generate reports?

Reports can be generated in Flir Assetlink, or by transferring the images to the Flir Acoustic Viewer.

